



WSIF Network Summit 2021

Living In Between Spaces

4-8 August 2021 at the Goetheanum and Streamed Online



With the generous support of



**STIFTUNG
EDITH MARYON**



Living In Between Spaces

Context The world changed in 2020 with Fridays for Future urging conscious action for the health of the planet, the untimely death of George Floyd raising awareness on systemic racism, and the challenges experienced in the cultural, rights, and economic spheres emerging out of the COVID-19 pandemic.

Out of these global challenges, the [World Social Initiative Forum \(WSIF\)](#) organized *WSIF Network Summit 2021: Living In Between Spaces* to create a hybrid platform where we could discuss and look at the phenomena behind the social issues we face as a global community - COVID-19, climate change, poverty, isolation due to lockdowns, technology, marginalization and inequality. Moreover, it was a gathering of different individuals to share how they are practicing aspects of Rudolf Steiner's Social Threefolding in their respective initiatives.

July to November 2020 To widen its reach and make the conversation available to people seeking inspiring and practical ways of dealing with the pandemic, WSIF launched a free 5-part monthly Web-Seminar Series on Facebook Live. This also became a preparation for the Network Summit.¹

31 Jul 2020 [What Now?: Social Needs of Today with Helmy Abouleish and Joan Sleigh](#)

What are the current social challenges we face as a global community and how can we address them?

28 Aug 2020 [The Power of Commitment: Safeguarding What is Human with Ute Craemer and Daisuke Onuki](#)

How can we actively participate in transforming society with a sense of freedom and responsibility?

25 Sep 2020 [What is My Place: The Challenges of Inclusion with James Sleigh and Bart Vanmechelen](#)

What kind of community do we envision that embraces each one's uniqueness and how can we make it happen?

30 Oct 2020 [Reconnecting: Transformative Villages of the Future with Maaianne Knuth and Grace Zozobrado-Hahn](#)

How can we build conscious villages that connect us to nature and empower each other?

27 Nov 2020 [Social Threefolding: The Key to Radical Change with Gerald Häfner, Joan Melé & Sergio Gaiti](#)

Why is radical change needed in our time and how is Social Threefolding a key that can offer such a change?

March-June 2021 This was followed by a 4-part Public Online Workshop Series aligned with Steiner's Social Threefolding.²

26 Mar 2021 [Finding the Spirit of Place for Integrated Cultural Development with Aonghus Gordon](#)

Focused on the fourfold human being - physical, etheric, astral and I, we can find how the cultural is linked to an evolutic context

30 April 2021 [Societal Change through Initiative with Cecilia Adasme Escobar](#)

The organization as a social living organism and as a meeting place for people who resonate with the same ideals

21 May 2021 [From Free Market to Market Free: Moving to Associative Economic Practices with John Bloom](#)

If human dignity is to be at the core of economic life, how can we move from seeing how interdependent we are in the material world to a place of compassion, in which we work to meet others' needs rather than ours

25 June 2021 [Regenerative Ecology: A Path to Sustainable and Permanent Solutions with Sundeep Kamath](#)

Regenerative Ecology offers resilient and circular solutions for our current crisis of biodiversity loss and climate change.

Regular Online Network Meetings were also organised for WSIF Network Members. Through conversations with our network members, three important themes emerged - leadership (self-identity), vulnerability (authenticity), and commitment (spiritual striving and service).

Preparing for the Network Summit The WSIF team decided to push through with the in-person Forum after the Ministry of Health in Switzerland announced that 100 people were allowed to participate in indoor events and a Zoom meeting took place with the contributors who all agreed with the decision. The design of the program was discussed in detail and crystallized when the team met in-person in Dornach (hosts, activities, tech support). The advertisements and registration were also in full-swing by June. Since WSIF Project Leader Joan Sleigh was only able to join the Forum via Zoom due to travel restrictions, the pre-and after Forum Team meetings were held onsite and online. All technical support and logistics were undertaken by the WSIF team, with the generous support, assistance and infrastructures provided by the Goetheanum.

Initial Goals and Outcomes *WSIF Network Summit 2021: Living In Between Spaces to Enhance Co-working in the World* aims to explore significant aspects of what is living and dying in a global social transformation. The main question of the Forum was: *How do you enhance what is living in your organization, enliven individual potential, and manifest a healthy social environment?*

¹ Video access available at the [WSIF Youtube Channel](#)

² Ibid.

Aligned with the WSIF Vision-Mission and in-tuned with the current global situation, the initial goals of the Forum were:

1. to explore Social Threefolding in practice and principle as tools for addressing the challenges arising from COVID-19, climate change and systemic inequality;
2. to re-enliven social encounters after months of social distancing/isolation;
3. to share and learn anthroposophically-inspired practices in social work as examples of Ethical Individualism, and
4. to inspire new initiatives and partnerships.

In terms of achieving Goals 1 and 3, we believe that the Forum was able to *provide diverse, inspiring and practical perspectives on Social Threefolding* through keynote lectures and panel discussions led by an intercultural, intergenerational, interdisciplinary and gender-represented group of experts in their respective fields. The speakers have years of experience in practicing aspects of Social Threefolding in their different initiatives and according to their local contexts.

1 Cultural Development: Nathaniel Williams, Free Columbia (USA); Rodrigo Rubido, Instituto ELOS (Brazil) and Simone de Picciotto, Hit the Beat (Germany)

2 Societal Change: Dottie Zold, Elderberries 3Fold Café (USA); Kristine Buckbee, Alliance Aliant (USA); Gerald Häfner, Section for Social Sciences-Goetheanum (Switzerland) and Sophia Santi, Consorcio, Desarrollo y Justicia (Venezuela)

3 Associative Economy: Dr. Annette Massmann, GLS Future Foundation for Development (Germany); Helmy Abouleish, SEKEM (Egypt); Andrea Valdinoci, WGA (Switzerland) and Sergio Gaiti, Etica Sostenibile (Italy)

4 Regenerative Ecology: Jean-Michel Florin, Section for Agriculture-Goetheanum (Switzerland); Maaianne Knuth, Kufunda Village (Zimbabwe) and Dr.med. Grace Zozobrado-Hahn, Koberwitz 1924, Inc (Philippines)

There was also a space given for both onsite and online participants *to ask their questions and share their insights, experiences and initiatives* during the panel discussions and interactive conversations.

In relation to Goal 2, we experienced that *merging online and onsite meetings cannot fully meet what a true encounter entails*. The new question for us is how to balance wider reach and access, which an online Forum can provide, with in-person gatherings, which we see as important in building and realizing a living network.

Based from the requests and feedback from onsite participants, we also realized the *importance of arts, movement, conversations, and communing with nature* - opening the day singing together, doing body percussion, listening to the cello before the lectures, expressing one's processes through drawings and mind maps, an evening conversation in pairs as a reflection of the day while walking around the Goetheanum gardens,

and the social art of meeting in such a diverse circle. As one participant shared, "It all starts with genuine interest and listening to really encounter one another."

For Goal 4, a few intentions for projects and partnerships came up in the onsite gathering. A further study or survey on this will be conducted through the network meetings and interviews in the following months.

Attendance Due to the uncertainty of COVID-19 regulations in Switzerland, the WSIF team only decided to go ahead with the in-person Forum after the Ministry of Health announced on May 26 that 100 people were allowed in indoor events and after a consensus was reached with the contributors to continue with a Hybrid Forum during a Zoom meeting which took place in June.

Looking at travel restrictions and quarantine requirements needed for some countries, the team projected 30 people to attend onsite and 50-70 people to attend online.

Unfortunately, the number of participants was less than expected. 23 participants attended onsite (including contributors, volunteers, and team members) and 60 registered online. The highest online attendance was 28 participants during "Associative Economy" and 25 participants during "Regenerative Ecology".

We concluded that the reasons for the low attendance were due to: travel restrictions within and outside Europe (high flight ticket prices, vaccination requirements/COVID-tests), weaker reach of WSIF with partner organizations in Switzerland and within Europe, wide scope of the theme and unspecified target audience, and that the online schedule was too long for people to participate in.

Problems Encountered and Finding Solutions The main problem the team faced during the Forum was around bridging the online and the onsite spaces. Through the introduction of more art, music, movement and walks in nature within the program, the team tried to reduce the "Zoom fatigue" expressed by the onsite participants. During these sessions - which could only happen in-person - Joan Sleigh and one of the team members facilitated conversations over Zoom for the online participants to reflect on the content from the day.

The schedule was also too full for a hybrid format. For such a network meeting to hold true to its purpose, the team learned that there should be enough space in between for the participants to socialize, network freely, and rest. Connecting Social Threefolding with the targeted SDGs explicitly as planned was also not met.

Technical difficulties also occurred, such as poor internet reception from the side of the online contributors and powerpoint presentations not working. The powerpoint presentation and recorded lectures were included in the After-Forum Packet, which was sent to the participants and contributors.

Recommendations Based on the lessons we learned in organizing such a hybrid Forum, as well as from the feedback received from the participants and contributors, we recommend the following to be implemented in our future Forums:

1. Create separate programs and teams responsible for onsite and online Forums happening either separately or simultaneously - with keynote lectures streamed live and recorded;
2. Provide space for Network Members and Forum Participants to share their initiatives (Marketplace of Initiatives) and/or to discuss social issues of their interest. Invite younger people to be keynote lecturers, panelists or presenters;
3. Give enough room for breaks - where participants and contributors have a healthy breather in-between;
4. Keep the same ticket prices to make it affordable and accessible to our target audience. Include PWD and senior citizens in the supported list. Provide free access to volunteers.
 - Onsite 150 CHF
 - Online Supporting 100 CHF
 - True Price 50 CHF
 - Supported 20 CHF
5. Have a specific Topic per Forum - for example, one Forum on the Cultural Sphere, following year on the Rights Sphere, then next on the Economic Sphere with a clear target audience in mind. Explicitly connect Social Threefolding with targeted SDGs depending on the Forum theme.
6. Reach out to social initiatives and organizations outside the Anthroposophic Circle (i.e Greenpeace)
7. Include practical hands-on sessions, artistic activities, movement, and time to connect with nature in the program.

Summary To conclude, *WSIF Network Summit 2021: Living In Between Spaces* was able to provide a platform where representatives from different social initiatives could share how they practice principles from Rudolf Steiner's Social Threefolding in their work, the challenges they encounter, and the impact they make in their community.

Diversity and representation were also achieved by inviting individuals coming from different cultures and backgrounds to give the keynote lectures, participate in the panel discussions and facilitate workshops. Looking at the roster of contributors and participants who attended, the Forum was indeed an inclusive gathering - intercultural, intergenerational, interdisciplinary, and gender-balanced.

Though the Forum was organized and hosted by a team of younger people with older people in equal co-working, we would like to invite young social entrepreneurs to share their initiatives and work with us

in future Forums. This will ensure bridging of generations in various contributions. We would also aim for holistic and transdisciplinary approaches and methods in our Forums by integrating arts, crafts, movement, nature studies, and the art of creating spaces of meeting.

Looking ahead, we will continue our Online Network Meetings for Network Colleagues only - as we deepen the themes on leadership (self-identity), vulnerability (authenticity), and commitment (spiritual striving and service).

WSIF East Africa Forum 2021: Living to Learn is still underway, as we plan with our partners Rudolf Steiner School Mbagathi, East African Association of Waldorf Schools and Kawangware/Kangemi Community Schools an online Lecture Series to support the work of the teachers, parents, and non-teaching staff within the challenges of Covid restrictions and the Art of Learning and Teaching in the Digital Age. This 7-part online series will prepare the in-person gathering rescheduled to take place in December 2022. The decision to postpone the Forum was due to the strict regulations of in-person gatherings announced recently in Kenya.

The 6-month online program *WSIF Leadership in Transformation* is also being designed and organized. Starting in January 2022, *WSIF LIT* will first conduct a Leadership Intensive Series to build the foundation of the actual program which will be launched in October:

1. From limitation to potentiality - "I as I" (Freedom in Culture)
2. From power to agreement - "I and You" (Equality in Rights)
3. From competition to collaboration - "I and You as We" (Association in Economy)
4. From scarcity to abundance - "We, the World and Beyond" (Cooperation in Agriculture)

All participants will be invited to open the full program with an in-person WSIF Forum in July 2022 in partnership with Ruskin Mill Trust, with whom we are also developing research as part of the online Leadership Program.

An upcoming Forum in the US is also being planned with partner organizations Elderberries 3fold Café and Sunbridge International Collective.

Other pending projects include a Project-Based Essential Skills Program for youth, ongoing studies on Social Threefolding, a possible collaboration with WGA and Freunde, and other professional development training that will equip the team in providing efficient and competent service to the network.

We are also focusing on nurturing our relationship with our colleagues and searching for new partners outside the anthroposophical community - as we mutually strive towards equal partnership for societal transformation, cooperation in the healing of our planet, and consciously upholding human dignity and becoming.

Managing Risks and Chances

The greatest challenge encountered was organizing the Forum within the uncertainties of it taking place due to the changing COVID-19 regulations worldwide.

1. Unpredictable travel and events regulations due to COVID-19

1. Hybrid Model

a. Streamed live with recorded access: Keynote Lectures + Panel Discussions, WSIF Building a Living Network, and Leading Thoughts

b. Streamed live only: Interactive Sessions

c. Only for Onsite Participants: Music & Movement Mornings, Workshops, and Open Space on Leadership, Vulnerability and Commitment

2. Network Members and Forum Contributors asking for financial support to attend the Forum

2. 3 volunteers helped the breakfast/snacks preparation and were given a Forum Pass as a gift to their valuable contribution.

b. Because of the generous support of our sponsors and the careful allocation of our funds, we were able to sponsor the transportation costs of 3 contributors who attended onsite.

c. Out of 60 registrations for online access, 35 people paid the Forum Pass, majority of which availed the normal price (50 CHF). The 25 registrants who were not able to attend were still given access to all recordings of the Keynote Lectures + Panel Discussions, WSIF Building a Living Network, and Leading Thoughts for free.



"A healthy social life is found only when, in the mirror of each soul, the whole community finds its reflection, and when, in the whole community, the virtue of each one is living." - Rudolf Steiner, 1919, Social Motto: Anthroposophy and the Social Question (GA 34)

Measuring Impact

On the last Forum day, the onsite participants wrote their insights and feedback on the “Freedom Board” and convened in a conversational “Harvest Session” with the online participants. Both onsite and online participants were asked to answer the feedback form at the end of the Summit. Out of 55 participants, 40% filled-out the evaluation form (12 onsite and 10 online). Based on our initial aims in terms of the Forum’s short-term and long-term impacts, along with the team debriefing and participants’ feedback, we conclude the following:

<p><i>1. be informed of the influence of COVID-19, climate change, and other systemic problems such as racism and violations on human rights on the current global situation and how these affect the cultural/spiritual, political/rights, and economic/ecological spheres</i></p>	<p>MET - Keynote Lectures, Panel Discussions, Workshops and Open Dialogues centered on these issues and both contributors and participants shared how they are addressing these current challenges in their localities and personal contexts.</p>
<p><i>2. find different tools and strategies to build sustainable and ecological social initiatives through Social Threefolding</i></p>	<p>MET - The contributors explicitly gave examples, tools and strategies how to safeguard freedom in the cultural sphere, nurture equality in the rights sphere, and cultivate cooperation in the economic sphere. The participants expressed their reflections on these and a few see how they can implement them in their current work/initiatives.</p>
<p><i>3. create prototypes of action plans that can be implemented in the different social initiatives designed according to the needs of their localities, as well as the culture and ways of their people</i></p>	<p>CANNOT BE DETERMINED YET - This could be an implicit impact that the participants can undertake only according to their needs and resources, as well as out their own free will and initiative. A further study or survey on this will be conducted through the network meetings and interviews in the following months.</p>
<p><i>4. celebrate the accomplishments and projects being implemented by the WSIF Network in their respective countries</i></p>	<p>PARTIALLY MET - Only a few initiatives presented their projects due to the limits of a hybrid format.</p>
<p><i>5. provide contemplative spaces and open discussion on Anthroposophy for participants</i></p>	<p>MET - For onsite participants, this space was created through Dottie Zold’s workshop on the 8-Fold Path. Open Discussion on Anthroposophy was achieved both online and onsite through the Keynote Lecture themes and workshops, explicitly discussing aspects of Social Threefolding. Most participants know or have applied Social Threefolding and Anthroposophy in their work and personal development.</p>

<p>6. <i>strengthen active partnerships among WSIF Network Members and between WSIF and the Sections at the Goetheanum</i></p>	<p>PARTIALLY MET - Only a few members participated in the Forum. Collaborations with the Social Science Section, Agriculture Section and World Goetheanum Association were achieved through their contributions in the Keynote Lectures and Panel Discussion.</p>
<p>7. <i>honor the people, land, and culture of countries represented through one-to-one encounters, ecological activities (gardening and clean-up drive), and appreciating music and dance through open stage</i></p>	<p>PARTIALLY MET - Due to the COVID-19 regulations, the ecological activities and open stage did not transpire. Culture exchange and appreciating music achieved through conversations, music and movement session with Simone de Picciotto every morning, and musical introduction before the beginning of the Keynote lectures.</p>
<p>8. <i>inspire new start-up social initiatives and/or active partnerships that will support holistic education, healthy human development, and an empathic community in service of individual becoming</i></p>	<p>CANNOT BE DETERMINED YET - This could be an implicit impact that the participants can undertake only according to their needs and resources, as well as out their own free will and initiative. A further study or survey on this will be conducted through the network meetings and interviews in the following months.</p>
<p>9. <i>follow-up and nurture self-directed initiatives and social enterprises regionally, based on the core understanding of Anthroposophy and that the dignity of every human being lies at the center of all social interaction and positive change</i></p>	<p>IN PROGRESS - This can be nurtured through the network, network meetings, and upcoming Forums.</p>

“Until one is committed, there is hesitancy, the chance to draw back. Concerning all acts of initiative and creation, there is one elementary truth, the ignorance of which kills countless ideas and splendid plans: that the moment one definitely commits oneself, then Providence moves, too.

All sorts of things occur to help one that would never otherwise have occurred. A whole stream of events issues from the decision, raising in one’s favour all manner of unforeseen incidents and meetings and material assistance, which no one could have dreamed would have come his way. Whatever you can do, or dream you can do, begin it.

Boldness has genius, power, and magic in it. Begin it now.” WH Murray, 1951, The Scottish Himalayan Expedition

Allocation of Funds

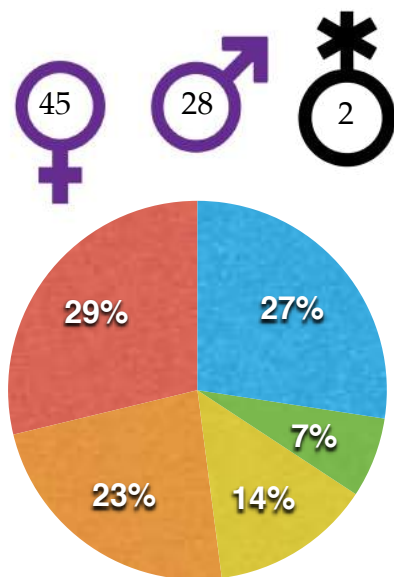
The allocation for bus transportation and accommodation at Rudolf Steiner School Birseck were cancelled due to a small number of participants who attended onsite. Contributors, team members and some participants were either hosted by Swiss branch members or friends of WSIF. A generous contribution from Clearspring Ltd. provided healthy snacks during breaks. Technical equipment used for the event, writing materials for the workshops, and aid with online payments were generously provided by the Goetheanum. Lecturers and panelists agreed on receiving a Forum Pass in exchange for their contribution. Some onsite workshop contributors requested aid for their travel costs.

	CHF	EUR
INCOME		
Fundraising		
(Mahle Stiftung)	(5,500.00)	(5,000.00)
(Stiftung Edith Maryon)	(4,000.00)	(3,735.38)
(World Goetheanum Association)	(4,000.00)	(3,735.38)
Forum Tickets		
(Onsite Participants) x 13 pax	(1,913.54)	(1,787.74)
(Online Participants)		
supporting at 100 CHF x 2 pax	(200.00)	(186.86)
normal price at 50 CHF x 19 pax	(955.04)	(891.63)
supported at 20 CHF x 8 pax	(144.53)	(135.04)
TOTAL	(16,713.11)	(15,472.03)
EXPENSES		
Organizational Costs	6,150.00	5,746.09
Transportation	3,736.91	3,484.41
Accommodation	791.00	738.88
Contribution to the Goetheanum		
(workshop rooms & Section for Social Sciences)	1,500.00	1,401.14
Transaction Fee		
(incoming online payments at 6%)	180.79	167.78
Miscellaneous		
(food, grocery, cards & gifts for contributors)	3,718.35	3,472.97
TOTAL	16,077.02	15,011.27
GAIN	(636.09)	(460.76)
GIFTS		
Contribution = Forum Pass		
150 CHF / Forum Pass (Keynote + Workshop onsite, Volunteers)		
5 onsite contributors & 3 volunteers	1,200.00	1,119.88
50 CHF / Forum Pass (Keynote online, Colleagues WSIF East Africa)	550.00	512.94
9 online contributors		
2 sponsored- WSIF East Africa Team		
Others		
(Snack c/o Clearspring Ltd. UK)	20 boxes of rice crackers for snacks	
(Technical Equipment)		
c/o Goetheanum EDV	laptop with charger, cables, speaker & mic, beamer	
(Set-up & Cleaning)		
c/o Goetheanum Betriebsdienst	Schreinereisaal	
	2 workshop rooms	
(Finance)		
c/o Goetheanum Finanzabteilung	online payments	
SCHOLARS		
25 people registered	unpaid and received recorded lectures / panel discussions	

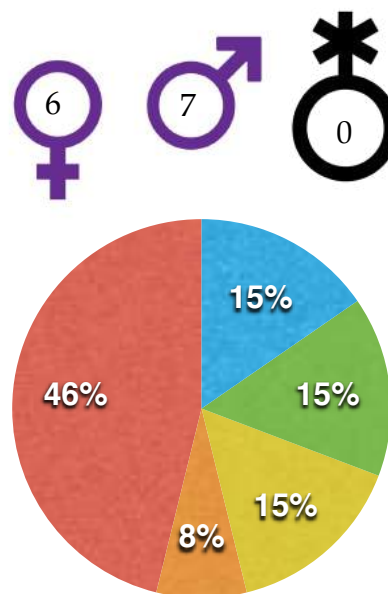
In Numbers

WSIF Network Summit 2021

Online and Onsite Participants



Keynote Lecturers, Panelists and Workshop Facilitators



● North America
 ● South America
 ● Africa and Middle East
 ● Asia and the Pacific
 ● Europe

Canada, USA

Brazil, Chile, Mexico, Peru, Venezuela

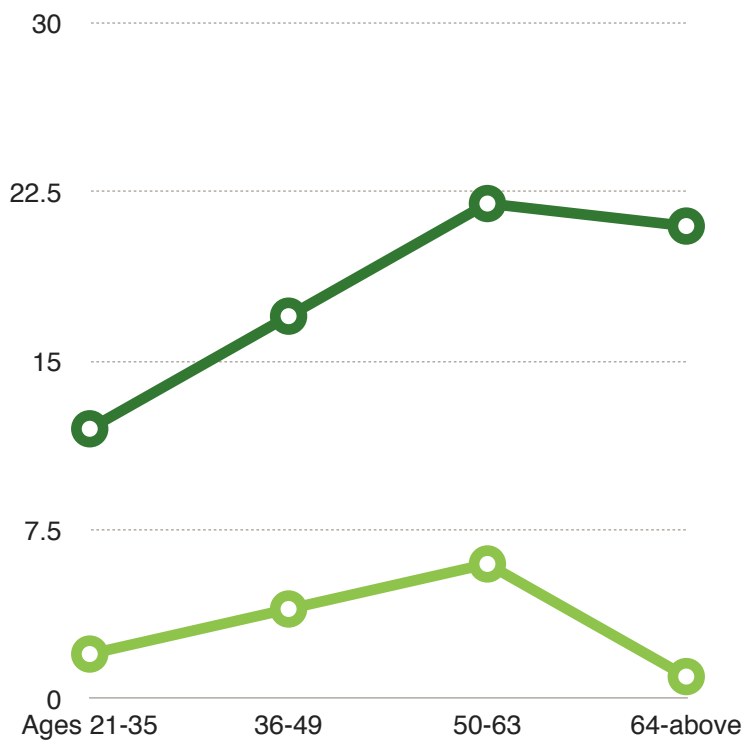
Egypt, Israel, Kenya, South Africa, Zimbabwe

Australia, China, India, Japan, Nepal, New Zealand, Philippines, Singapore, Taiwan

Italy, Germany, Netherlands, Portugal, Romania, Spain, Switzerland,

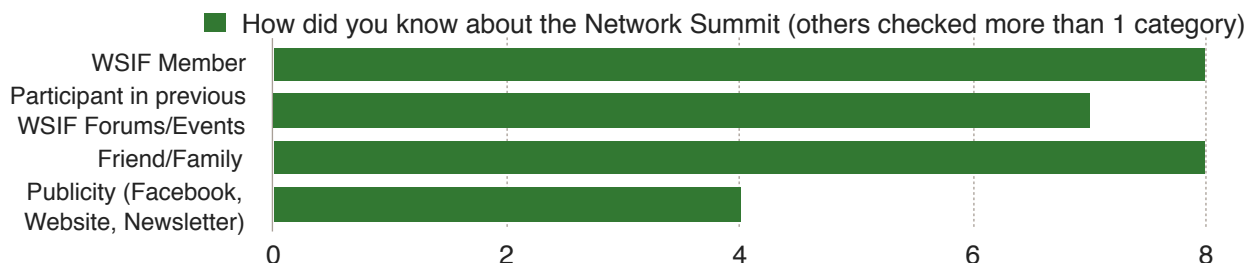
○ Participants registered (75 people)
○ Contributors (13 people)

[Forum Feedback Questionnaire Here](#)



Feedback from the Participants

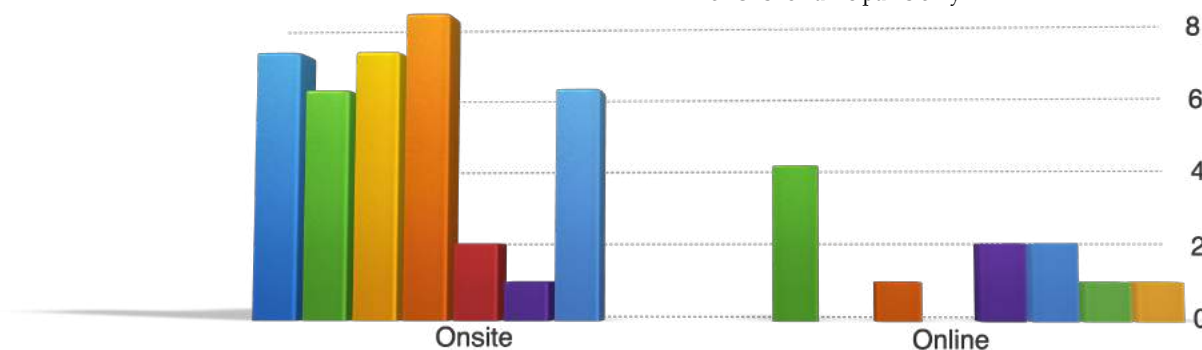
Onsite Participants = 12 people (50% of attendees / N=25) | Online Participants = 10 people (35% of attendees / N=30)
Total Evaluation Forms answered by Participants = 22 Filled-out Forms (40% of online/onsite attendees / N=55)



What elements of the Forum did you enjoy the most*

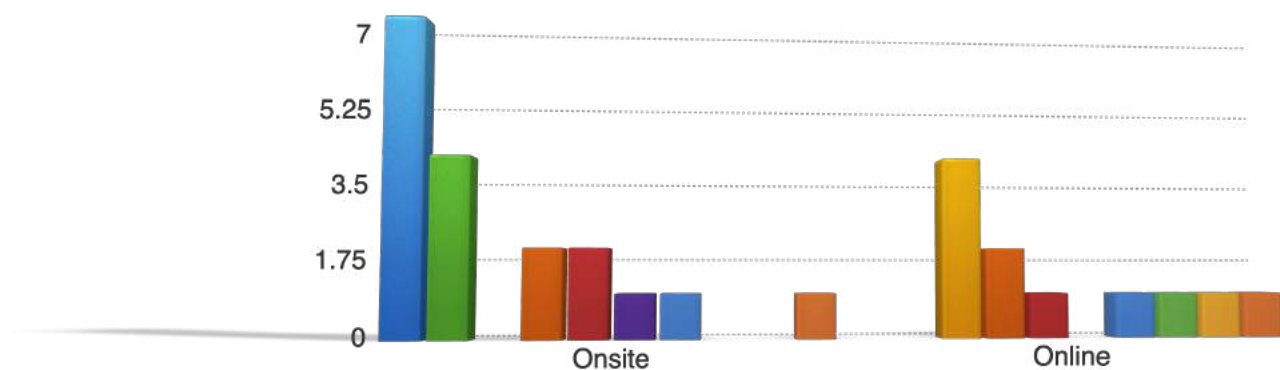
- Art (Singing, Movement, Music)**
- Workshops*
- Leadership, Vulnerability, Commitment**
- Connecting with new people/Sharing
- Presenters
- Keynote Lectures & Panel Discussions
- Interactive Conversations/World Café
- Theme: Social Threefolding
- Recorded Sessions

**for Onsite Participants only.



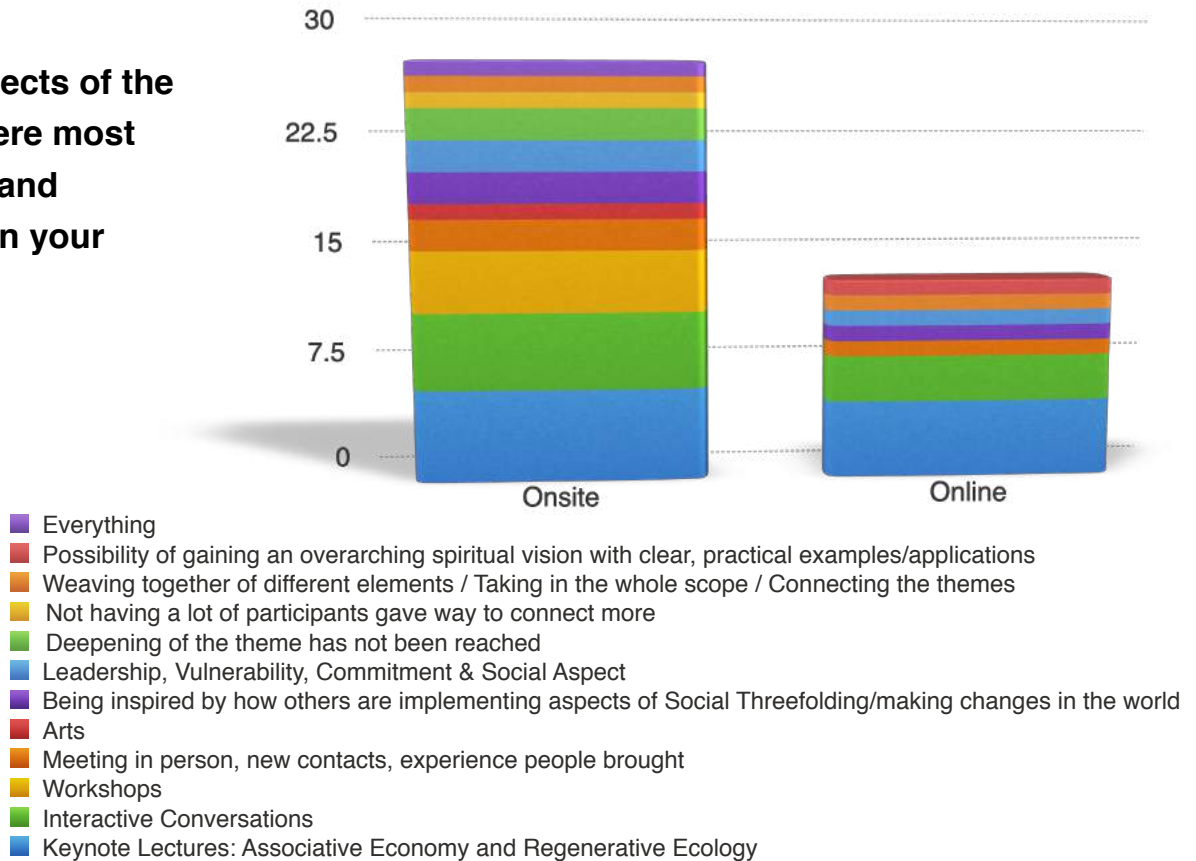
What would you like to see more of in future Forums*

- More art and practical sessions
- Social Exercises like Eurythmy, Movement, Walking in Nature
- Panel Discussion / Social issues, more in-depth on the topics (climate change)
- In-person conferences - meeting people onsite
- Various formats for exchange, getting to know, more space to share starting initiatives
- More integration of the other "mind", heart, will
- More participants, younger people telling about their initiatives
- As much variety of relevant subjects as possible
- Active collaboration to model how various initiatives can build an ecosystem of support
- No answer



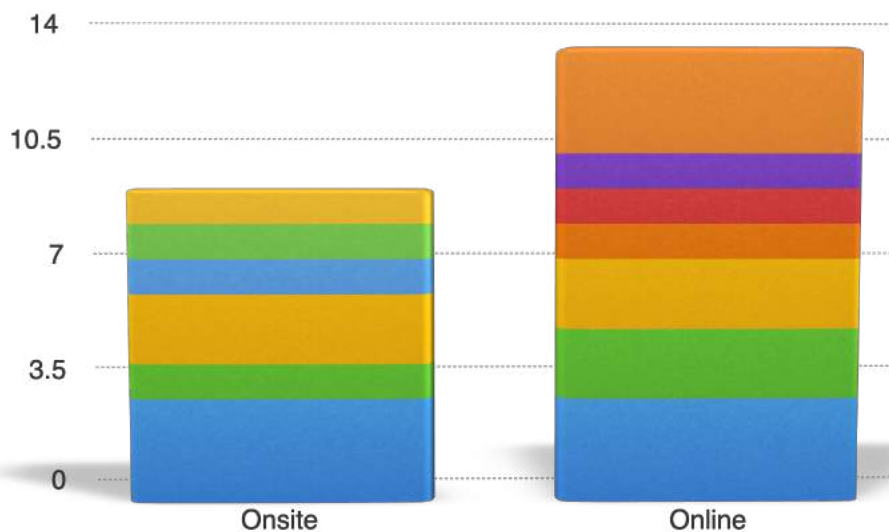
* Some respondents shared more than one aspect / example. Answers formulated by participants (not multiple choice).

What aspects of the Forum were most effective and relevant in your work*



Did the Network Summit inspire any new initiative or joint venture? If so, please tell us about it *

- Inspired my current work/projects I am currently developing
- Inspiring that it highlights overall global awareness and clamour for integration
- Online Training Sessions and Charter
- Social Contribution and Team Work
- Definitely - WSIF in Holland and Europe
- Hopefully in the future
- I got more motivation to begin a social business
- Inspired with lots of new ideas but no concrete initiative yet, still germinating
- Joint project / initiative with another attending organization / regional hub
- No answer



Reflections from participants on pp. 12-14

* Some respondents shared more than one aspect/example. Answers formulated by participants (not multiple choice).

"I appreciated very much that we had the onsite event - being inspired by how others are spreading their light through their activity despite the challenges. Another good space as to link theory and practice, from inner aspects towards the practical life - the open space for leadership, vulnerability and commitment which made it very helpful to explore how to connect from the ideal lectures to my practical life. Workshop with Sergio was very helpful as to express concerns that I had and also to receive a clear picture of the practicality of the threefold social initiative." (Female, 32, Romania)

"In the workshop, it became really clear that making space in yourself to receive the presence of the other and the world is essential for the worldwide shift in consciousness that is now happening. This conference has both aspects connected in a really beautiful way as these words of Rudolf Steiner express: When in the soul of the individual is reflected the whole world and in the world lives...I really enjoyed the conference and experienced a growth to deeper connection throughout the days. The organisation also adjusted the program to the experiences of the participants in a very good way. I think you did a great job!!! Thanks for all." (Male, 61, NL)

"I really appreciate the preparation and organisation. I loved every moment being here! You did a wonderful job." (Female, 57, Germany)

From Online Participants

"It was a great lecture and amazing panel discussion including world café and even opening with Joan! Alone in myself I tend to have a challenge navigating between the spaces...coming together -connecting realizing that many are doing the same allows for community and finding and supporting each other on this course then comes the individual freedom again! Thank you and the WSIF team for creating this Social initiative...I understand better now what WSIF is about...reading it, it sounded so complex. In this exchange it is tangible what the mission and vision is and how relevant (it is) for our living communities - To really work out of gratitude! Thank you." (Female, 46, Kenya)

"Not very effective unfortunately. It would have been better if the program had continued with the themes of the Sekem meeting I attended 1 1/2 year ago. For instance discussion between younger and older people. For instance about the Ecosystem Restoration camp movement: <https://ecosystemrestorationcamps.org/> Why is there no connection, or with for instance refugee initiatives? Why can no lectures / presentations be given by younger people? There was no connection made between the on-line and on-site participants. So the social group feeling was almost absent. Information / abstracts should been given before the lecture. Initiatives can better be presented by interviews, blogs or other visual ways." (Male, 71, Netherlands)

Additional Feedback From Onsite Participants

"There were some spaces of sharing in groups where I felt a little bit in hurry. In my feeling and understanding, I would need a little bit more time to not feel under pressure in a intimate moment of sharing where feeling comfortable is very important... You brought in very interesting people with very current anthroposophical perspectives, in my opinion. Some of the evening closings with Joan were very beautiful and inspiring. It's always healing to listen to her. So, as I said, congratulations and thanks to all for the work done and for the group you form." (Male, 23, Spain)

"Brought my consciousness to the connections between everything (spaces)." (Female, 27, US)

"The new contacts and the conversations with the people here at the forum I found really enriching - to get opinions, ideas and feedback to my questions." (Male, 30, Switzerland)

"I am very thankful to all of you in the organisation. You have done a wonderful work with so much care, attention and subtlety. The program had a good balance and you were also flexible in making a few adaptations." (Female, 55, Netherlands)

"What we do here in small is actually very big!" (Female, 91, Netherlands)

"...getting to know each other and setting intention break-out rooms online so that we can really feel that it is a community." (Other, 37, Philippines)

"I think the panel form was interesting, to see how an area was explored from multiple perspectives. I think this would be even better in person and in a non-hybrid situation." (Male, 41, US)

"Yes. We have a group that has been exploring aspects of economics and we are going to try to source sustainable, local and ethically produced goods that we all use. And a hub in South Africa" (Female, 61, South Africa)

"I always love WSIF as a social contributor who works with full energy." (Male, 40 Nepal)

"(It) inspired me to continue the work we do in our part of the world, while feeling spiritually connected to all others around the world working in allied fields and with the similar goal of a world which respects individuality and freedom and which places value on ecology, health, peace. Thank you for all the hard work which made the conference possible, the hard work during the conference itself and the hard work to bring all the recordings/ documentations, etc. into a final report, upon which future work can be based" (Female, 60, Philippines)

Keynote Lectures & Panel



4.Aug Cultural Development | Nathaniel Williams, Rodrigo Rubido, Simone de Picciotto

- Fund culture with gratitude
- Very connected and clear lecture of Nathaniel: the cultural DNA of the US has these traces of the battle of interdependency (adversaries are always in relation)
- "Empathy has atrophied because we multitask", Nathaniel Williams
- Diversity reflects and develops individuality.
- Freedom can be developing empathy for the other and thus widening my freedom.



5.Aug Social Development | Dottie Zold, Gerald Häfner, Sophia Santi with guests Kristin Buckbee and Frank Agrama

- Only change will be possible if we change our social behavior by asking questions to each other! Being interested in the other - First of all!
- Creating space for the other is really brought into practice by Dottie and her colleagues at Elderberries Café. Very much touched by that and meeting Dottie and Frank!
- Uniting together and staying connected to strengthen ourselves and one another
- The smallest step together with the ones way behind is the foundation for this new World Relationship. It's starting with my own I and grows to a sense of the "I" of the world



6.Aug Associative Economy | Dr. Annette Massmann, Helmy Abouleish, Andrea Valdinoci, Sergio Gaiti

- Money as directed thoughtfulness
- Let's make money "human" again!
- Capital as flowing spirit in the world
- Affordable Agriculture is BD, not chem
- Value Creation NOT equal to Price
- Inspiring thought: Farms are the villages of the future!
- Inspiring initiatives being presented - that gives hope for the future! Idealistic and realistic!

7.Aug Regenerative Ecology | Jean-Michel Florin, Maaianne Knuth, Dr.med. Grace Zozobrado-Hahn

- The earth as one living organism
- Create space for all beings
- Integrate instead of separate
- Let the elements work together in the landscape and each being may have its space. And maybe there, then earth becomes healthy and we, too!
- Inclusion and Diversity = We are not at war with nature!
- Agriculture is culture!



Workshops & Open Space

Harvests & Seeds for the Future

Reflections from onsite participants gathered on 8.Aug.21

Music and Movement | Simone de Picciotto

- Harmony
- Sound Dome
- Making the body whole again! Thank you!
 - Music is beautiful: breathing
 - Listening
 - Life and Spirit: loved it!
- Wonderful leadership in the best sense, bringing people



Creating a Healthy Social Organism - Mindfulness and Activism | Dottie Zold with Frank Agrama

- Working on/with myself to serve the community
- Create a place in myself where others can find a home
- The 8-fold path as the way to strengthen ourselves for making space for others
- I learned so much from all who joined. Threshold moment!
- Gossip is ground for dismissal. Even listening to it.
- Find a common language - where everyone feels seen and met how they are
- Listen with the heart is making space for the other to feel welcome, so I can become a host to the world



From Freedom to Fraternity | Sergio Gaiti

- Anthroposophy can be a leader in innovation! Take it up!
 - Consciousness
 - Find patterns
 - Limits and Engagement
 - How to think economy?
- Connecting to human beings and life!
- The importance to create an ALTERNATIVE through initiatives
 - What's behind the phenomenon
 - What is the role of soul and spirit in the larger society?

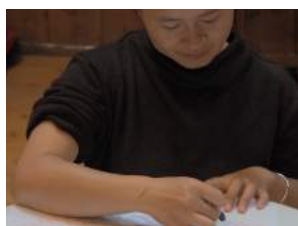


5.Aug Leadership | Joan Sleight and Nicole Asis

- Inviting the other for a dance
- The different kinds of leaderships and seeing all the young people take turns leading
- Serve

6.Aug Vulnerability | Milena Kowarik and Ami Cochrane

- My wounds can strengthen me and help to realize the process around me
 - Courage: healing through sharing
- This made us connect on a very intimate level and touch each other's souls



7.Aug Commitment | Janne Bierens and Juan Bottero

- Spiritual support
- Motivation and trust: in yourself and that you are supported
- Do it!

	WED 4TH	THU 5TH	FRI 6TH	SAT 7TH	SUN 8TH
All times are in CET					
8:00 - 9:00					
9:00 - 9:30					
9:30 - 10:30					
11:00 - 12:30					
Lunch					
14:30 - 15:30					
15:30 - 16:30					
17:00 - 17:45					
17:45 - 18:30					
Dinner					
20:00 - 21:00					
21:00 - 21:30					
	COLOUR CODE IN-PERSON (Unrecorded) IN-PERSON/ONLINE (Recorded Access) IN-PERSON/ONLINE (Unrecorded) Online Contributor In-person Contributor				
		Breakfast			
		Warm up: Music & Movement led by Simone de Picciotto (Hit the Beat)			
		Interactive Conversations Reflections & Exchange with Friends from Around the World			Next Steps A call to action
		WORKSHOPS			Harvest & Farewell
		Building a Living Network			
		WSIF Mission & Vision	WSIF Global Research	WSIF Future Steps	
		Open Forum on LEADERSHIP	Open Dialogue for VULNERABILITY	Open Space for COMMITMENT	
		Societal Change "Creating Radical Space for the Other" - Detlev Goll (U2)	Keynote Lectures Associative Economy "Ideas and practices on how to enhance co-operation and co-working in the world" - Annette Macmann (U2)	Regenerative Ecology "Towards Resilient Agriculture and Food Systems: The Example of Biodynamics" - Jean-Michel Florin (U2)	
		Panel Discussion Detlev Goll, Gerald Höfner, Kai Ziegler & Sophie Sauti	Panel Discussion Annette Macmann, Helmy Abouleish, Sergio Gatti & Andrea Vaidinoti	Panel Discussion Jean-Michel Florin, Maianne Knuth & Krishna Daring	
		Interactive Conversations Reflections & Exchange with Friends from Around the World			
		Leading Thoughts			
					Hosted By
					Sponsored By

Leadership emerges from self-leadership as the ability to access and act from a place of authentic wisdom. Leaders encourage others to lead from their own individual capacities while holding the vision of the interrelated whole. They are able to know themselves, name themselves and be themselves.

Open Forum on Leadership DAY 2 15:00 - 16:30

Building a Living Network

Vulnerability is the birthplace of leadership and authenticity. It builds courage and creativity. No act of authentic leadership or artistic process comes about without being grounded in vulnerability. It implies feeling into the unknown potential of endless possibility.

Open Dialogue on Vulnerability DAY 3 15:30 - 16:30

Building a Living Network

Commitment is being true to one's own unique self in relation to everything around. It implies actively stepping into and taking up a common purpose with others, thereby enabling the independent solitary human being to be an agent of the interrelated whole.

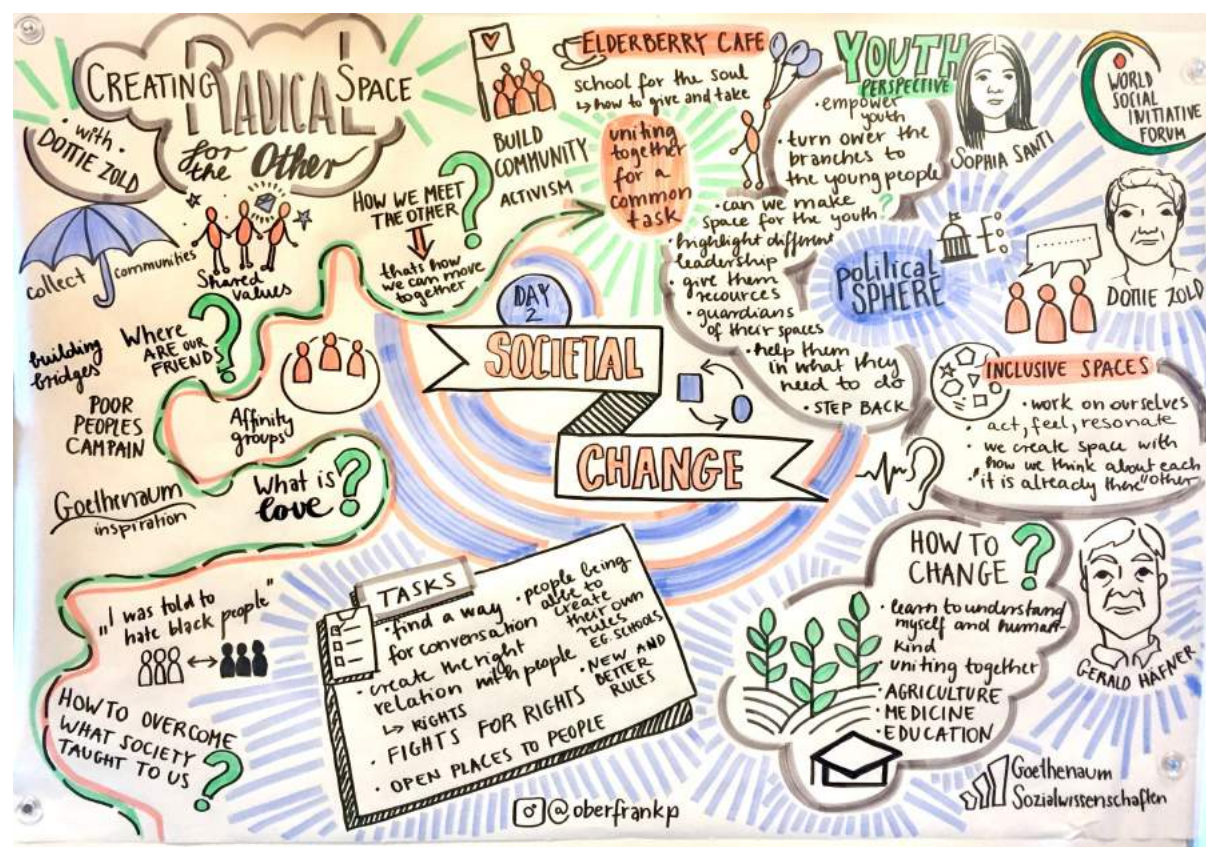
Open Space on Commitment DAY 4 15:30 - 16:30

Building a Living Network

"The sum of ideas which are effective in us, the concrete content of our intuitions, constitutes what is individual in each of us, notwithstanding the universality of ideas. In so far as this intuitive content applies to action, it constitutes the moral content of the individual. To let this content express itself in life is both the highest moral driving force and the highest motive a person can have who sees that in this content, all other moral principles are in the end united. We may call this, ethical individualism" - Rudolf Steiner (1894) Philosophy of Freedom GA 4 pp. 134-145 (Translated by Michael Wilson, 2011 ed, Rudolf Steiner Press)

Graphic Harvests

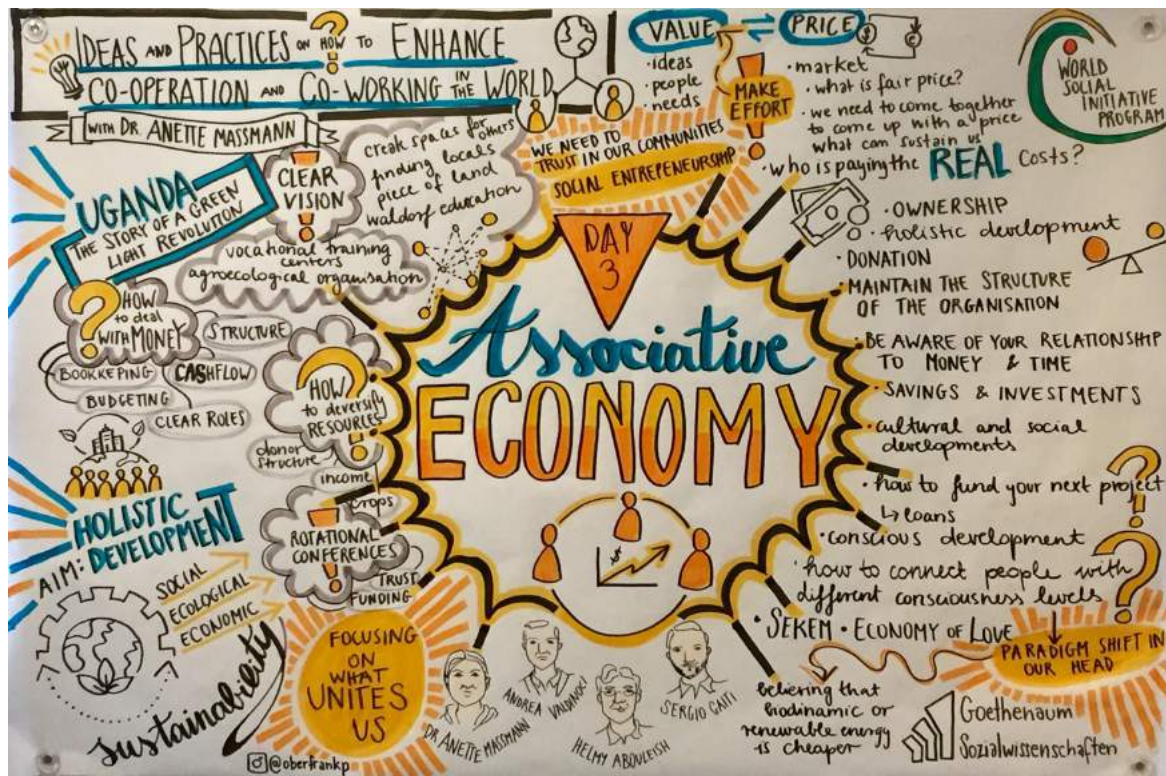
Drawn by Petra Oberfrank during the keynote lectures & panel discussions



IG: @oberfrankp

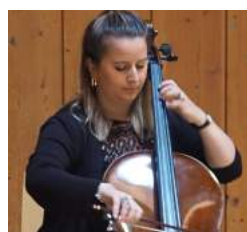
Graphic Harvests

Drawn by Petra Oberfrank during the keynote lectures & panel discussions

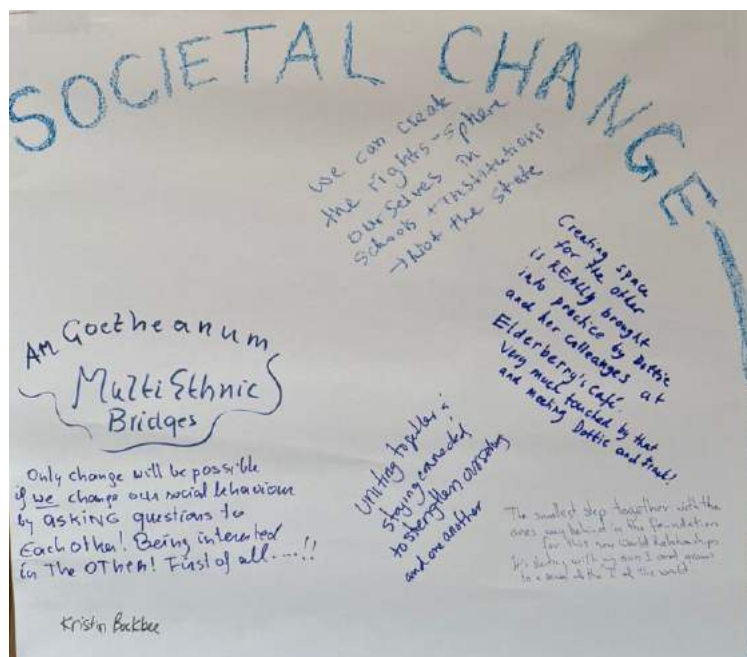


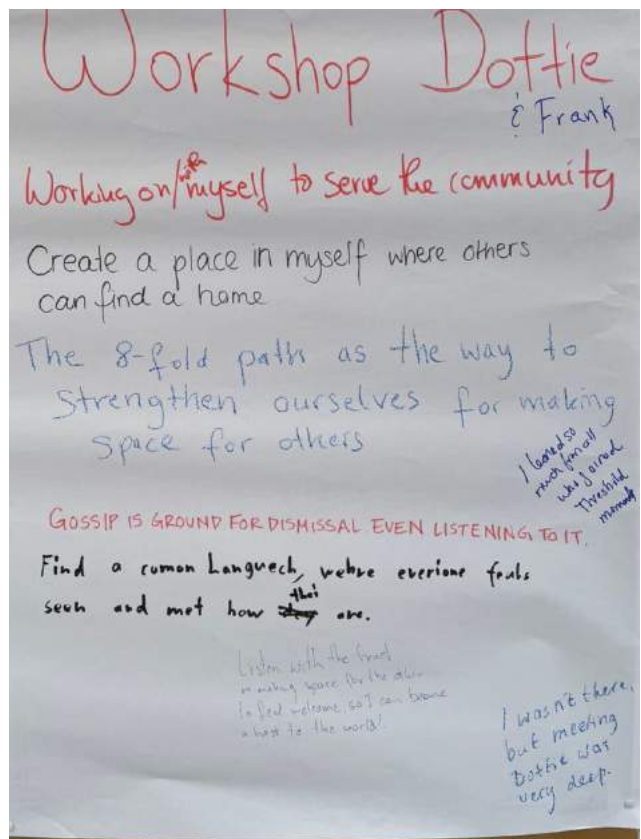
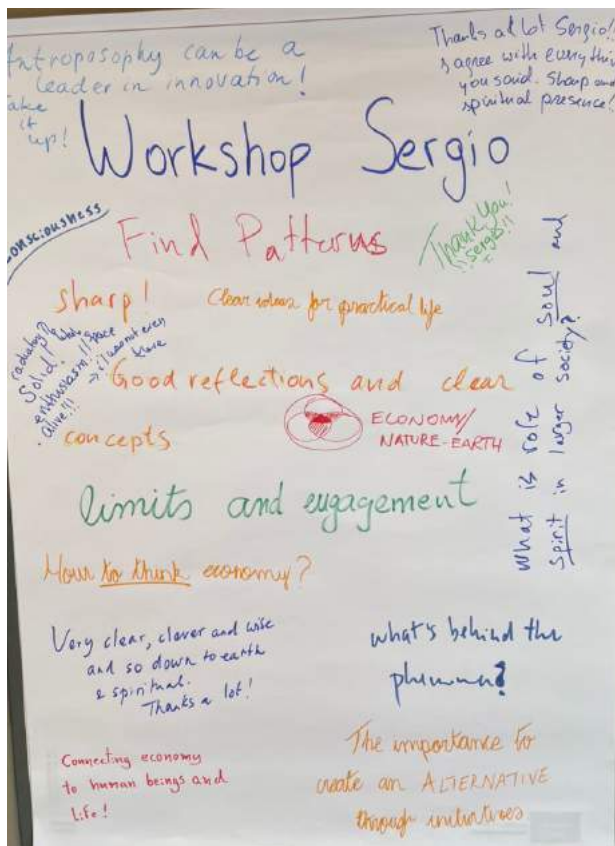
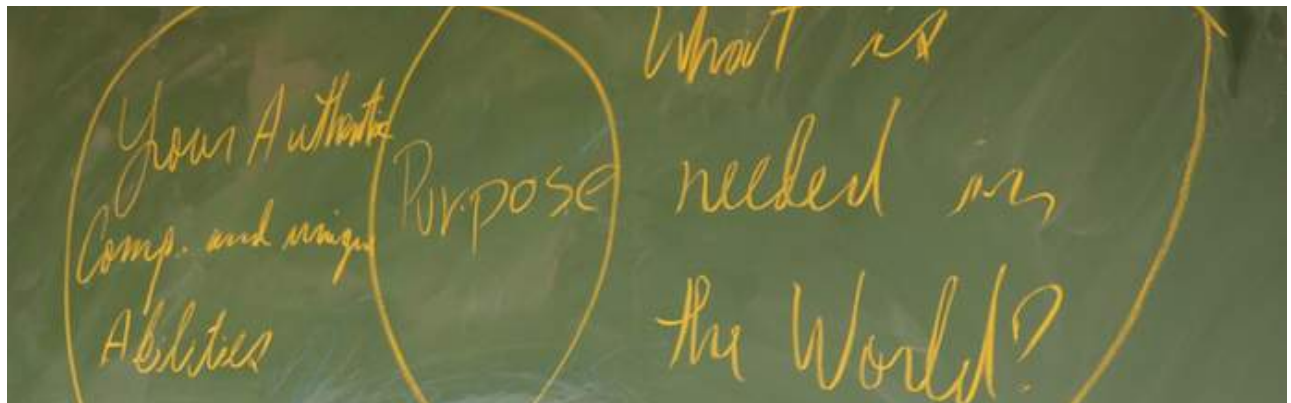
IG: @oberfrankp

Impressions



Freedom Board






Freedom Board

Begin it NOW
-Murray-

gifts gifts
exchange

CHOOSE A WAVE 
& COMMIT TO IT.

SINGING

Life & Spirit! Loved it!

Harmony

Music Beautiful

Sound dome

Listening

Wonderful leadership in bringing people together in their hearts! Thanks a lot!

BREATHING

Vulnerability

My wounds can strengthen me and help to realize the process around me

healing through sharing

inner connection

this made us connect on a very intimate level and 'touch' each other's souls

Leadership

serve

CONDUCT

INVITING THE OTHER FOR A DANCE

It is if I could experience how we are also led - in a very subtle way

Commitment

Loved the art!

Give and receive

Do it!

Stand up and open

Spiritual support

Motivation + Trust (in yourself and that you are supported)

Begin it NOW

-Murray-

Inside and outside

World

Not a world

Not a world

Not a world

 ECONOMY/
NATURE-EARTH
engagement

Inside and outside

World

Wie kann man einsteigen?
und in was?
Wie öffnet man sich
für andere? (Natur,
Soft skills / zwischenmenschlich)

• Meeting!
exploring 3fold s.o. as
a key for transformation

• in between-Space
more than body

• 3fold social other

• what has Anthroposophy
to say to this situation?

Thank you for making this Forum possible

WSIF Network Summit 2021 Team Forum Manager: Milena Kowarik | Project Leader: Joan

Sleigh | Technical Support, Publicity and Art of Hosting: Ami Cochrane, Janne Bierens | Fundraising, Accounting,

Evaluation and After-Forum Report: Nicole Asis | Technical Support: Juan Bottero

Volunteers Massa Ando, Mayu Saphir, Frank Agrama, Adina Nedelea, Zuri Burns

After-Forum Report Editorial, Collation/Interpretation of Evaluation and Lay-out: Nicole Asis | Proofreading/Editing: Ami Cochrane, Joan Sleigh | Accounting: Nicole Asis, Milena Kowarik | Participants' Evaluation Form: Nicole Asis, Ami Cochrane, Janne Bierens | Photos: Massa Ando, Janne Bierens, Juan Bottero, Nicole Asis

Contributors Cultural Sphere: Nathaniel Williams (Free Columbia-US), Simone de Picciotto (Hit the Beat-Germany), Rodrigo Rubido (Instituto ELOS-Brazil) | Political Sphere: Dottie Zold (Elderberries 3Fold Café-US) with Guests Frank Agrama (Elderberries 3Fold Café-US), Kristin Buckbee (Alliance Aliant), Gerald Häfner (Section for Social Sciences at the Goetheanum-Switzerland), Sophia Santi (Consciencia, Desarrollo y Justicia-Venezuela) | Economic/Ecological Sphere: Dr. Annette Massmann (GLS Future Foundation for Development Germany), Helmy Abouleish (SEKEM-Egypt), Andrea Valdinoci (World Goetheanum Association-Switzerland), Sergio Gaiti (Etica Sostenibile-Italy), Jean-Michel Florin (Section for Agriculture at the Goetheanum-Switzerland), Maaienne Knuth (Kufunda Village-Zimbabwe), Dr.med. Grace Zozobrado-Hahn (Koberwitz 1924, Inc-Philippines) | Petra Oberfrank (Graphic Harvester)

Sponsors Mahle Stiftung, Stiftung Edith Maryon, World Goetheanum Association, Clearspring Ltd.

Support Goetheanum-School for Spiritual Science & Section for Social Sciences-Goetheanum | Jessie Osmer (EDV), Paul Stender (Section for Social Sciences) | Steven Thomas, Thasan, Salvan, Jan, Jiyoung (Betriebsdienst) | Mauro Fenu (Veranstaltungen) | Anna Krygier (Druckerei) | Oliver Conradt, David Strahl, Nanna Osmer, Ilona Thomas (Finanzabteilung)

WSIF Living In Between Spaces Web-Seminars Pre-Summit Online Programs Concept/Planning: Juan Bottero | Contributors: Helmy Abouleish (SEKEM-Egypt), Joan Sleigh (World Social Initiative Forum-Switzerland), Ute Craemer (Monte Azul-Brazil), Daisuke Onuki (CRI International-Japan), James Sleigh (Camphill Village West Coast-South Africa), Bart Vanmechelen (Anthroposophical Council for Inclusive Social Development-Switzerland), Maaienne Knuth (Kufunda Village-Zimbabwe), Grace Zozobrado-Hahn (Koberwitz 1924, Inc-Philippines), Gerald Häfner (Section for Social Sciences at the Goetheanum-Switzerland), Joan Melé (Banca Etica-Latin America), Sergio Gaiti (Etica Sostenibile-Italy), Aonghus Gordon (Ruskin Mill Trust-UK), Cecilia Adasme Escobar (Banca Etica-Latin America), John Bloom (Anthroposophical Society in North America-US), Sundeep Kamath (Biodynamic Association-India)

WSIF Team Joan Sleigh, Milena Kowarik, Ami Cochrane, Juan Bottero, Janne Bierens, Nicole Asis

WSIF Founders Ute Craemer, Truus Geraets

WSIF Advisory Board Ute Craemer, Truus Geraets, Helmy Abouleish, Aonghus Gordon, Bart Vanmechelen, Gerald Häfner, Jean-Michel Florin, Daisuke Onuki, Massa Ando, Sundeep Kamath, Andrea de la Cruz, Georg Wiedemer, John Bloom

"Where lie the sources of life? They lie in what kindles the moral ideals that inspire us. And so we can start to see that when we allow ourselves to be warmed through and illumined by moral ideals in this present life, these will bear life, tone and light out with us into the cosmos, and become world-creative powers. We bear world-creative powers out into the cosmos, and morality is the source of these creative powers. In this way, we discover a bridge, in a holistic view of the human being, between moral ideals and what enlivens the external physical world." - Rudolf Steiner (1920) The Bridge from the Physical to the Spiritual and Moral GA 202 p. 40 (Translated by Matthew Barton, 2020 ed, Ita Vegman Verlag)